

BIO-99™ COVERALL

RE-USABLE EMERGENCY MEDICAL SERVICE PPE

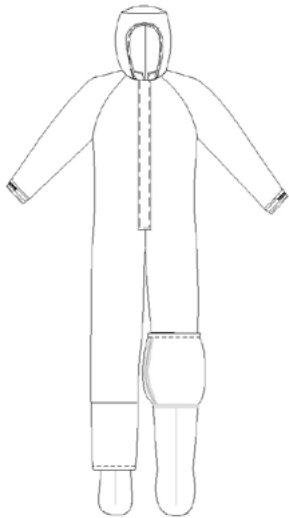


Blauer Manufacturing Company is proud to offer a new and unique PPE solution for emergency medical service and triage personnel working on the front line. The BIO-99 coverall is designed with input from the emergency medical service community to provide optimal functionality and integration with complementary PPE, such as N95 respirators and examination gloves, as well as more complete and durable barrier coverage than disposable PPE offerings.

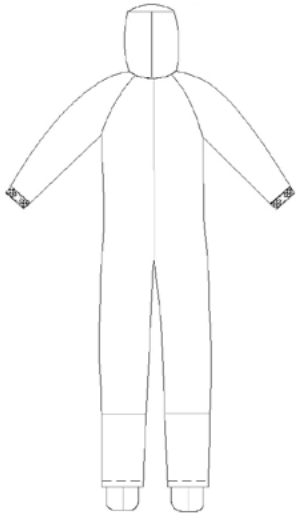
Specifications and Key Attributes

- 3rd party certification to the NFPA 1999 Standard on Protective Clothing and Ensembles for Emergency Medical Operations
- Passes rigorous requirements of ASTM F1671 for Viral Penetration Resistance
- Meets Interagency Board (IAB) performance recommendations of ASTM F1671 and NFPA 1999 for garments included in *Minimum Recommended Guidance on Protection and Decontamination for First Responders Involved in COVID-19 Cases (April 10, 2020)*
- Durable and breathable GORE® CROSSTECH® fabric and rugged seam construction appropriate for long duration wear and physically demanding field activities such as patient retrieval and transport.
- Commercially launderable between uses*
- 20 year shelf life
- Berry Compliant. Produced in Blauer's ISO 9001 certified factory in Missouri
- Front-entry coverall design with detachable hood allows for efficient self-donning and doffing with minimal risk for cross contamination during doffing process.
- Full-cut patterns with adjustable sleeve cuffs and hood allow for efficient stock pile size distributions.
- Available with adjustable sleeve cuff (model **BIO99F**) or with attached GORE® CROSSTECH® glove and utility over glove (model **BIO99FG**).

*Validated against viral penetration barrier performance requirements of the NFPA 1999 standard after 10 laundering and drying cycles



Model BIO99F front with boot over flap raised

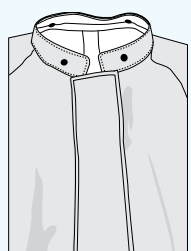


Model BIO99F rear

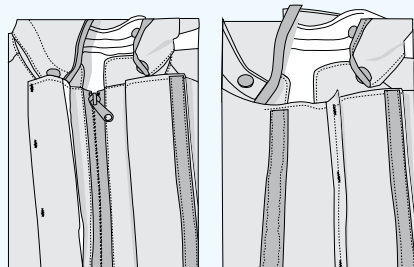


Blauer BIO-99 NFPA 1999 Multiple Use Coverall

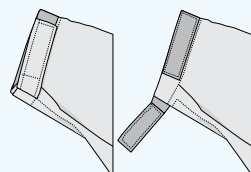
For pricing and availability, please contact: **Tom Ames** • 617-869-9379 • tames@blauer.com



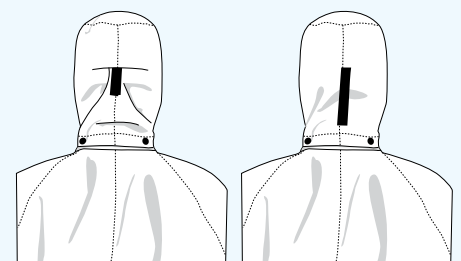
Standup Nehru collar with plastic snaps



Double storm flap design with liquidtight zipper



Adjustable cuff design to secure around examination gloves



Detachable hood with adjustment strap

BIO-99 COVERALL SIZE AVAILABILITY

GARMENT SIZE	SMALL	MEDIUM	LARGE	XL	2XL	3XL	4XL
Chest Size	36-38"	40-42"	44-46"	48-50"	52-54"	56-58"	60-62"
Weight	100-140 lbs	120-180 lbs.	140-200 lbs.	150-220 lbs	210-250 lbs	230-300 lbs.	280-350 lbs.
Garment Length	Short	Regular	Tall	Xtall			
Height	5'6" and shorter	5'7" - 6'0"	6'1" - 6'3"	6'4" +			

NFPA 1999 MULTIPLE-USE GARMENT TEST DATA

GARMENT OR ELEMENT	PERFORMANCE REQUIREMENT	TEST METHOD	REQUIREMENT	RESULTS	
BIO99F & BIO99FG	Liquidtight Integrity	ASTM F1359	No liquid penetration	Pass	
BIO99F & BIO99FG	Overall garment function and integrity	ASTM F1154	Complete all tasks within 15 minutes	3 min 4 sec	
			No liquid penetration	Pass	
			Protective flap remains closed over closure system	Complies	
GORE® CROSSTECH® Fabric (garment, glove, and over sock)	Viral penetration resistance	ASTM F1671	No penetration for 1 hour	Pass	
		Burst strength	ASTM D3787	Strength ≥ 178 N (40 lbf)	406.0 N
		Puncture propagation tear resistance	ASTM D2582	Tear resistance ≥ 25 N (5.5 lbf)	30.8 N (M) 55.8 N (X)
		Total heat loss (THL)	ASTM F1868	≥ 450 W/m ² /W	700.23 W/m ²
		Evaporative resistance (Ret)	ISO 11092	≤ 30 Pa M ² /W	8.67 Pa M ² /W
Garment to Garment Seams	Viral penetration resistance	ASTM F1671	No penetration for 1 hour	Pass	
		Seam breaking strength	ASTM D1683	Breaking strength ≥ 222.5 N	259.2 N
Closure	Closure breaking strength	ASTM D751 (Section 8.12 of NFPA 1994)	Breaking strength ≥ 34 N/25 mm	77.0 N/25 mm	

Fabric specification: 3.5 oz/yd². GORE® CROSSTECH® fabric constructed with a semi-permeable membrane laminated between a 100% nylon warp outer fabric and a 0.7 oz man made filament non-woven inner facing resulting in a protective waterproof material with high moisture vapor transmission, blood-borne pathogen resistance, and common chemical and biological resistance.

Optional glove material and type of attachment: GORE® CROSSTECH® fabric glove permanently stitched and seam sealed to suit and used in conjunction with included Maxi-Flex Endurance over glove as the required work glove.

The BIO-99 garment series is certified to the NFPA 1999 Standard for Protective Clothing and Ensembles for Emergency Medical Operations and is not an FDA-regulated medical device.



For pricing and availability, please contact:

Tom Ames
617-869-9379
tames@blauer.com